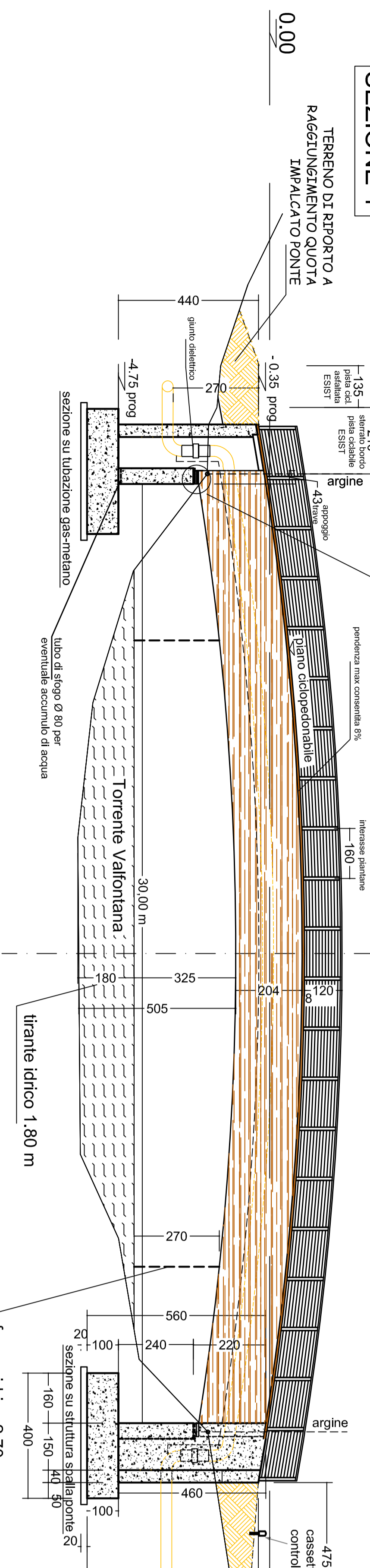


Trave a I legno lamellare 30x190

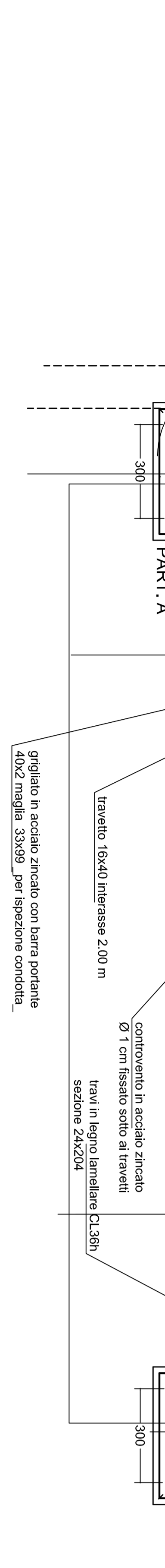
SEZIONE 1

TERRENO DI RIPORTO A RAGGIUNIMENTO QUOTA IMPALCATO PONTE



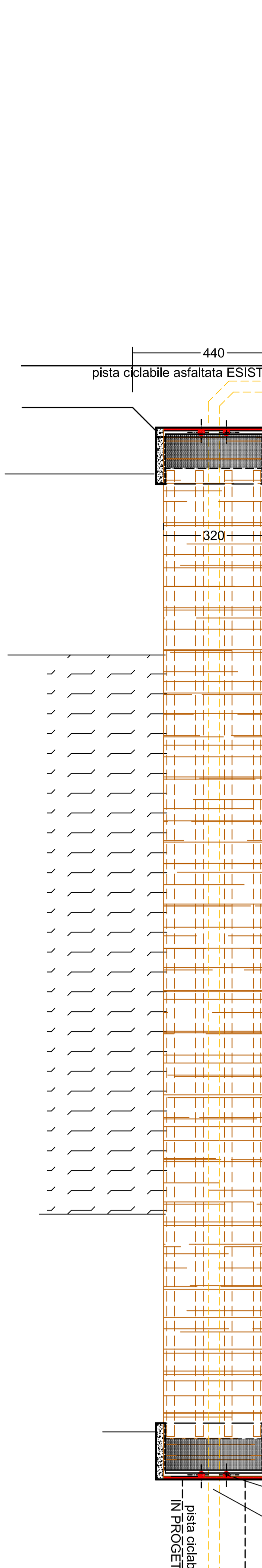
PANTA 1

alla quota dei travetti

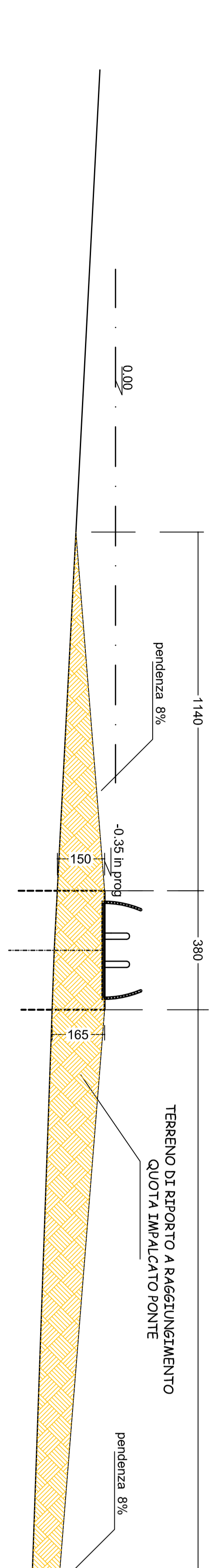


PANTA 3

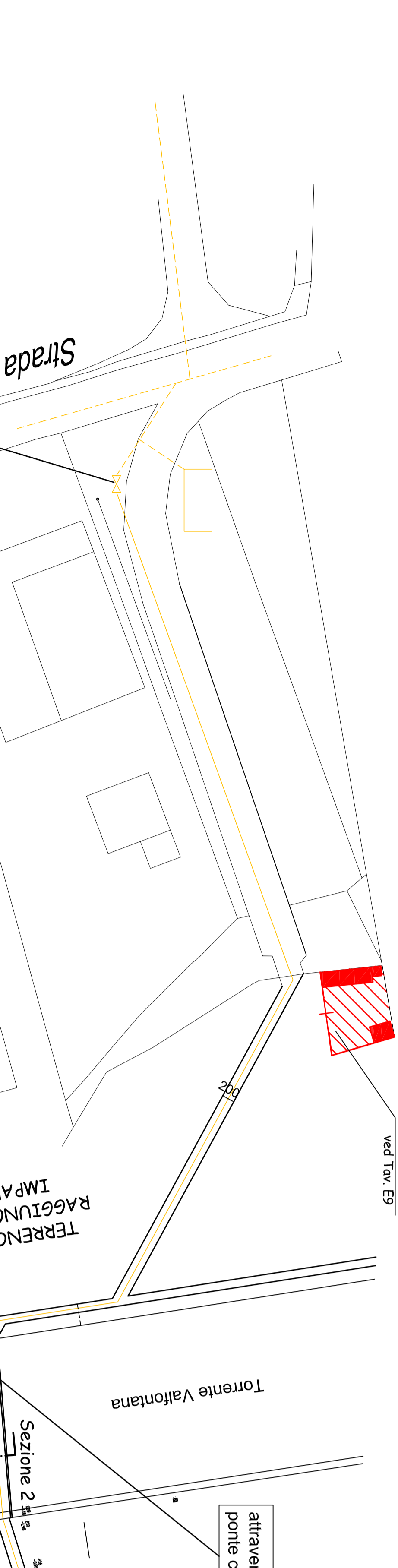
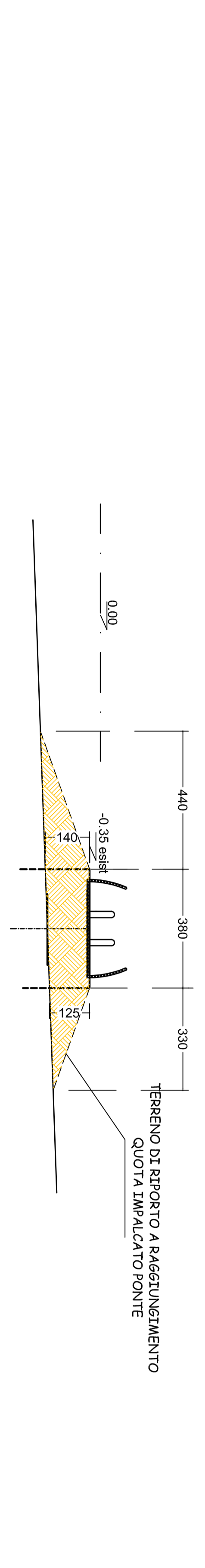
alla quota del piano ciclo-pedonale



PART. B

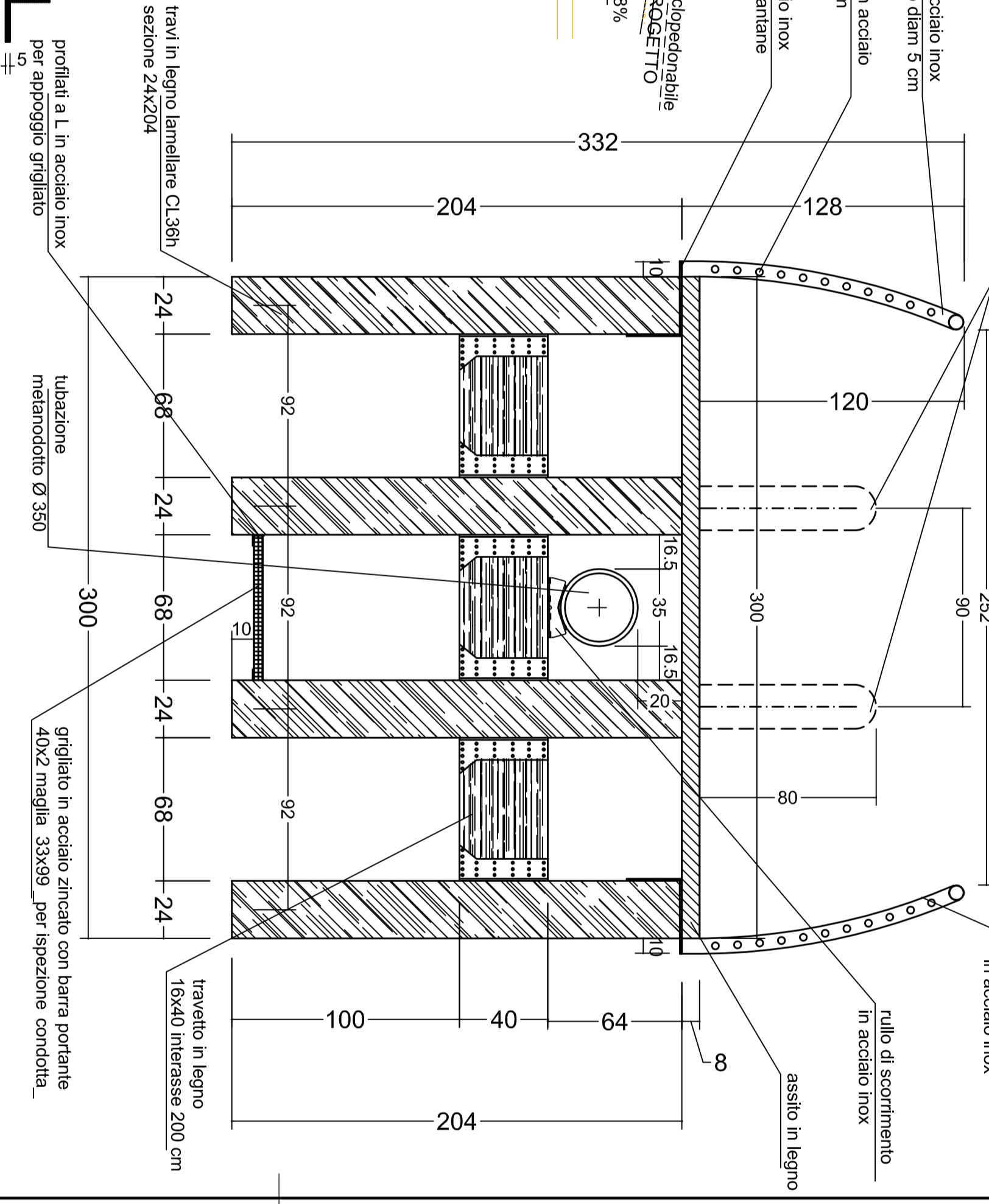


PART. C

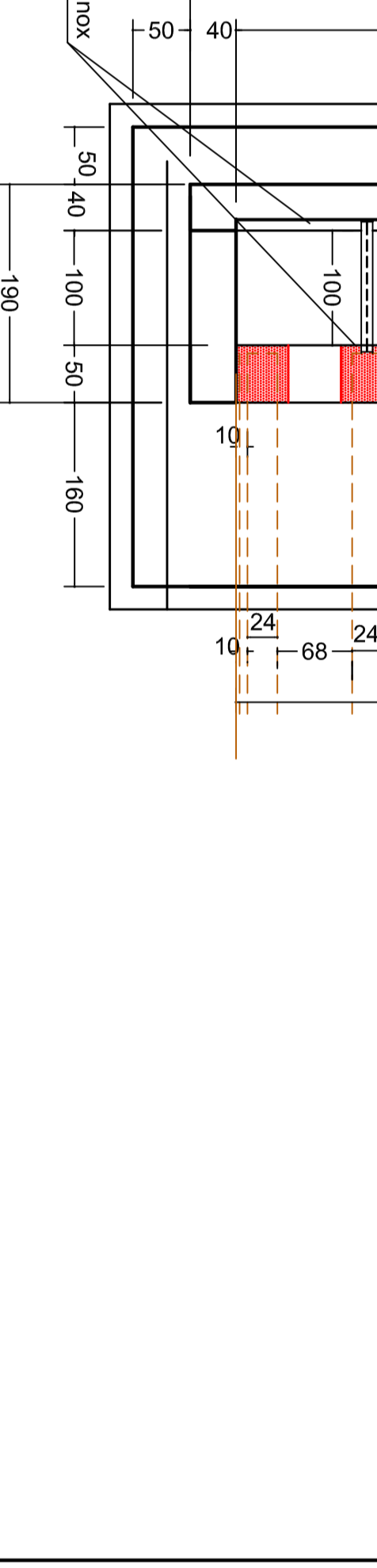
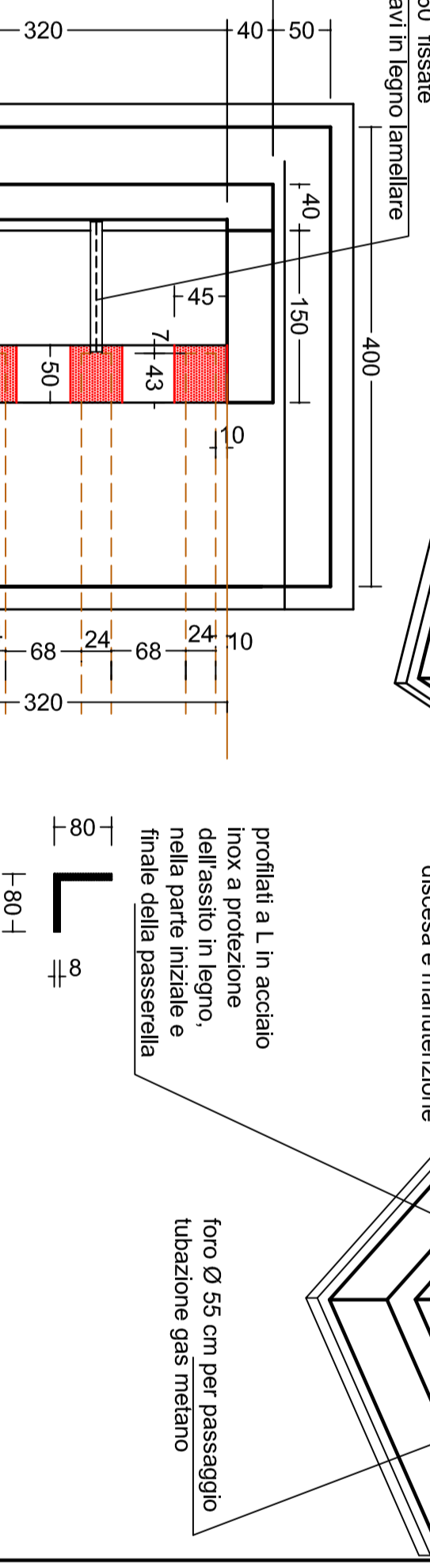


pali in acciaio inox Ø 20 cm tassellati su sottostante struttura in cls H tor= 88 cm (H= 80 cm dal piano impalcato)

SEZIONE 2



PANTA 2



CONSORZIO DELLA MEDIA VALTELLINA PER IL TRASPORTO DEL GAS

CMVTG

PROGETTO ESECUTIVO

REALIZZAZIONE RETE DI TRASPORTO DEL GAS METANO DI III SPECIE IN COMUNE DI CHIURO (SO)

PARTICOLARI COSTRUTTIVI PASSERELLA CICLO-PEDONALE

E.5

Table with project details including dates, scale, and project name.

